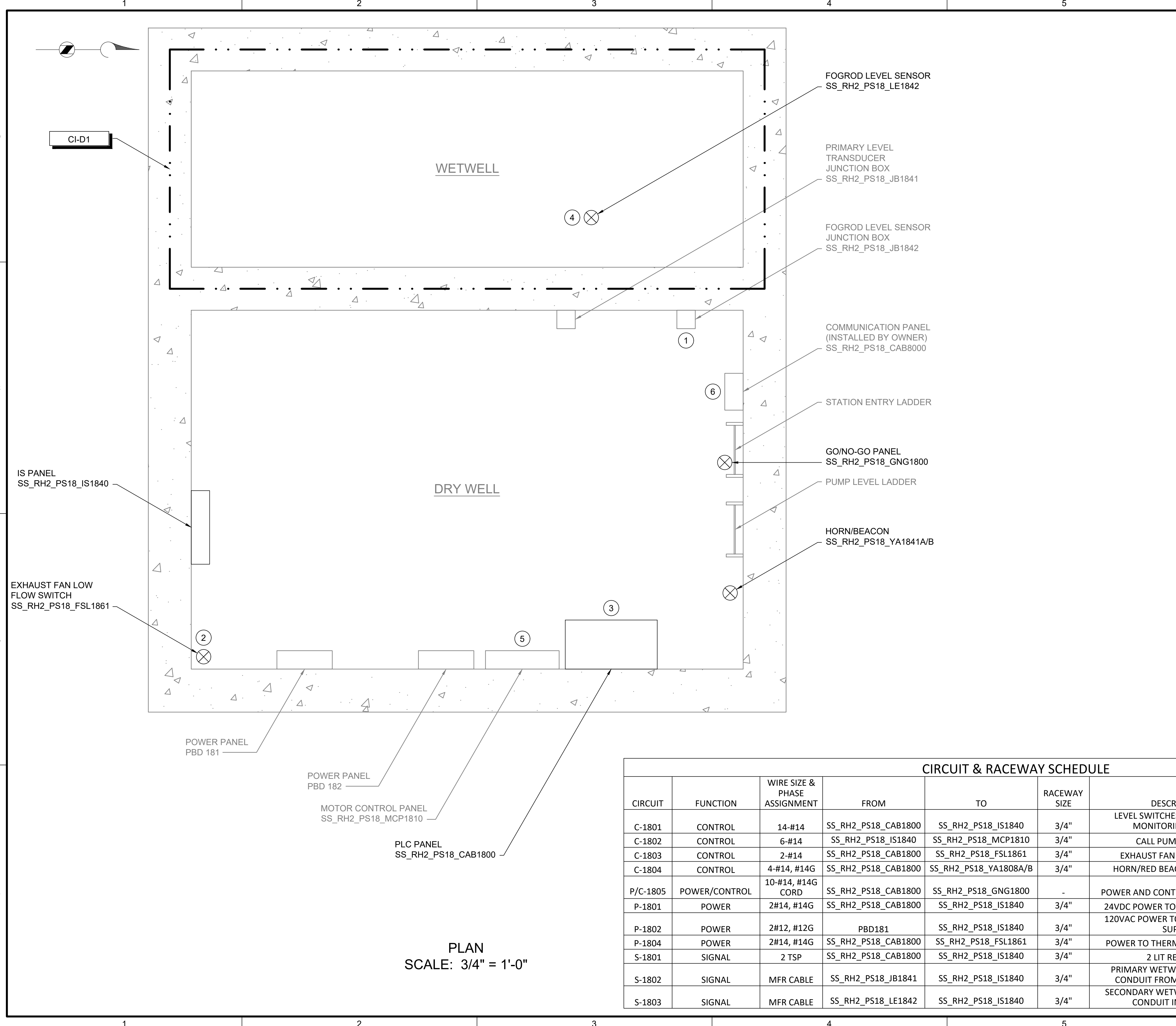


Path: C:\USERS\JACKSON\BPC\DWG\1820948 FILENAME: I-18701.DWG PLOT DATE: 6/24/2022 11:02 AM CAD USER: DAN JACKSON



PLAN
SCALE: 3/4" = 1'-0"

CIRCUIT & RACEWAY SCHEDULE							
CIRCUIT	FUNCTION	WIRE SIZE & PHASE ASSIGNMENT	FROM	TO	RACEWAY SIZE	DESCRIPTION	LOCATION(S)
C-1801	CONTROL	14-#14	SS_RH2_PS18_CAB1800	SS_RH2_PS18_IS1840	3/4"	LEVEL SWITCHES, FAULT, PANEL MONITORING, SPARES	GRATING LEVEL
C-1802	CONTROL	6-#14	SS_RH2_PS18_IS1840	SS_RH2_PS18_MCP1810	3/4"	CALL PUMPS TO RUN	GRATING LEVEL
C-1803	CONTROL	2-#14	SS_RH2_PS18_CAB1800	SS_RH2_PS18_FSL1861	3/4"	EXHAUST FAN FLOW SWITCH	GRATING LEVEL
C-1804	CONTROL	4-#14, #14G	SS_RH2_PS18_CAB1800	SS_RH2_PS18_YA1808A/B	3/4"	HORN/RED BEACON FAN ALARM	GRATING LEVEL
P/C-1805	POWER/CONTROL	10-#14, #14G CORD	SS_RH2_PS18_CAB1800	SS_RH2_PS18_GNG1800	-	POWER AND CONTROL TO GNG PANEL	GRATING LEVEL TO STATION HATCH DOOR
P-1801	POWER	2#14, #14G	SS_RH2_PS18_CAB1800	SS_RH2_PS18_IS1840	3/4"	24VDC POWER TO IS PANEL MODULE	GRATING LEVEL
P-1802	POWER	2#12, #12G	PBD181	SS_RH2_PS18_IS1840	3/4"	120VAC POWER TO IS PANEL POWER SUPPLY	GRATING LEVEL
P-1804	POWER	2#14, #14G	SS_RH2_PS18_CAB1800	SS_RH2_PS18_FSL1861	3/4"	POWER TO THERMAL FLOW SWITCH	GRATING LEVEL
S-1801	SIGNAL	2 TSP	SS_RH2_PS18_CAB1800	SS_RH2_PS18_IS1840	3/4"	2 LIT READINGS	GRATING LEVEL
S-1802	SIGNAL	MFR CABLE	SS_RH2_PS18_JB1841	SS_RH2_PS18_IS1840	3/4"	PRIMARY WETWELL LEVEL. *NEW CONDUIT FROM JB TO IS PANEL	GRATING LEVEL
S-1803	SIGNAL	MFR CABLE	SS_RH2_PS18_LE1842	SS_RH2_PS18_IS1840	3/4"	SECONDARY WETWELL LEVEL. *NEW CONDUIT IN DRY WELL	GRATING LEVEL

GENERAL NOTES:

1. PLAN DRAWING IS PARTIAL REPRESENTATION OF THE SITE AND IS ONLY INTENDED TO PROVIDE DETAILS RELATED TO THE SCOPE OF THIS WORK.
2. REFERENCE AS-BUILT RECORD DRAWING BY CAREY & KRAMER CONSULTING ENGINEERS, DRAWING NUMBER 6223-M312.2, SHEET 13 OF 32 FOR ELEVATIONS RELATED TO WIRING AND CONDUIT DEMOLITION.
3. REFER TO CIRCUIT & RACEWAY SCHEDULE ON THIS DRAWING FOR NEW WIRING AND CONDUIT WITHIN THE PUMP STATION.

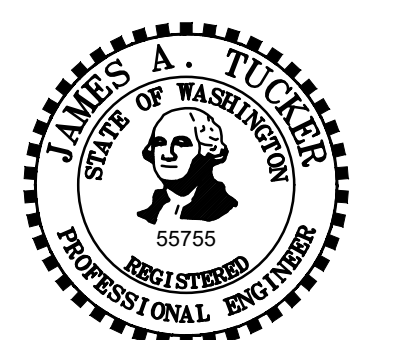
KEY NOTES:

- 1 REFER TO SECTION 26 05 00 FOR CONDUIT SEALOFF REQUIREMENTS FROM CLASS I DIV 1 WETWELL.
- 2 REFER TO DWG I-00004 DETAIL C FOR THERMAL FLOW SWITCH INSTALLATION DETAIL ON EXISTING EXHAUST DUCT.
- 3 REFER TO SECTION 26 05 00 FOR PLACING COMPRESSION FITTINGS ON EXISTING CONDUIT TO ROUTE TO NEW PANEL.
- 4 COORDINATE WITH OWNER ON FOGROD INSTALLATION LOCATION IN WETWELL.
- 5 CONTRACTOR TO PROVIDE NEW NAMEPLATE FOR EXISTING MOTOR CONTROL PANEL AS "PUMP STATION 18 MOTOR CONTROL PANEL SS_RH2_PS18_MCP1810".
- 6 LOCATION OF COMMUNICATION PANEL IS APPROXIMATE. COORDINATE WITH OWNER ON FINAL COMMUNICATION PANEL LOCATION.



701 PIKE STREET
SUITE 1200
SEATTLE, WASHINGTON

PERMIT ISSUE



CITY OF
MERCER ISLAND

**SEWER SCADA
SYSTEMS
REPLACEMENT**

REVISIONS		
REV	DATE	DESCRIPTION

LINE IS 2 INCHES
AT FULL SIZE

DESIGNED: CAB
DRAWN: DDJ
CHECKED: LSL
CHECKED: LSL
APPROVED: CAB

FILENAME: I-18701.DWG
BC PROJECT NUMBER: 153585
CLIENT PROJECT NUMBER

INSTRUMENTATION

**PUMP STATION 18 -
PLAN**

DRAWING NUMBER
I-18701
SHEET NUMBER
XX OF XX